

# Blue Diamond Industries

[www.bdiky.com](http://www.bdiky.com)

## Blue Diamond 3N1™ Boreable Conduit

\*Patent No. 9,819,160

Blue Diamond has developed a new “Boreable” HDPE continuous conduit with 3 innerducts pre-installed inside. The innerducts are installed at our manufacturing facility during the extrusion process. It is a similar process to CIC (Cable in Conduit) where power or communication cables are typically installed during production.

Blue Diamond 3N1™ saves time and money by allowing contractors to bore a complete package. Innerducts do not have to be pulled through after the bore, allowing you to blow fiber or pull power cables as soon as the bore is complete. With Blue Diamond’s 3N1™, innerducts won’t get stuck or twisted during field installation.



3N1™ is currently available in 3 configurations:

- 4” SDR 11.5 casing with 3 - 1.25” SDR 13.5 innerducts
- 4” SDR 13.5 casing with 3 - 1” SDR 13.5 innerducts
- 4” SDR 11.5 casing with 4 - 1” SDR 13.5 innerducts

Available lengths are 500’ to 1,000’ on steel reels.

Although 3N1™ is particularly suited to HDD (horizontal directional drilling), it can also be used for plowing along highways.

# Blue Diamond Industries

[www.bdiky.com](http://www.bdiky.com)

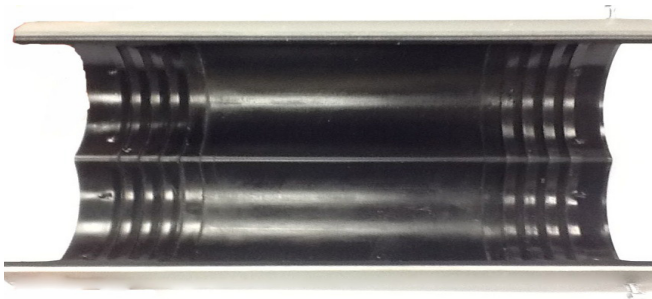
To connect longer runs of 3N1™, Blue Diamond and ETCO Specialty Products have developed a coupling system that pressure-seals the innerducts and provides a positive water-tight connection for the outer casing pipe. The innerducts are connected using 6" wide, dense polyurethane elastomer ribbed interal compression fitting. The fitting can withstand 100 psi pressure, making it ideal for blowing fiber through the innerducts. The 3N1™ casing connector is 12" long rigid PVC case with a ribbed polyurethane insert. It opens as a clamshell to easily accomodate the HDPE casing in the field. Five marine grade stainless steel clamps compress the polyurethane liner making the entire connection water-tight. Stainless steel screws will provide 1000 lb tensile pull strength if required.



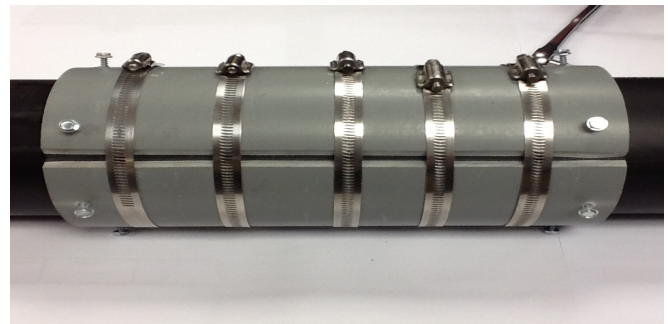
3N1™ COUPLER ON DUCT



OPEN FITTING WITH POLYURETHANE INSERT AND INNERDUCT



EMPTY 3N1™ CASING



CLOSED FITTING WITH MARINE GRADE STAINLESS STEEL CLAMPS